



PWUP - Campania – Pilot (Italy): Working against the odds to create a community energy model

Capacity Building – Webinar – 27/06/2025

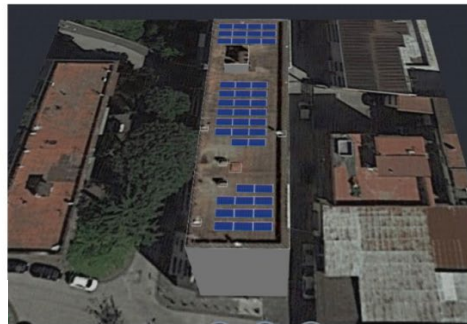
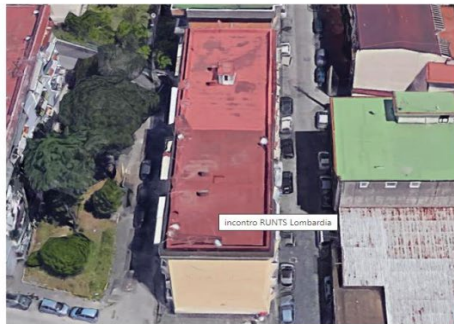


This project has received funding from the European Union's Horizon 2020 research and innovation program under Grant agreement No. 101033940

In the Campania Pilot two specific areas have been selected in the municipalities of San Giuseppe Vesuviano and Palma Campania for the implementation of the pilot.

In each of these areas 3 popular housing buildings were selected, in order to reach a total of 200 families.

Technical, economic and legal analysis for collective production of renewable energy performed in **12 buildings (6 social housing and 5 public buildings)** and **1 public area** for a total of 1.100kWp.



ID	Comune	Edificio	Potenza Installabile Impianto FV kWp	FPO Fotovoltaico €	Totale Lavori e Forniture €	Oneri per la sicurezza €	Totale Lavori, Forniture e OOS €	IVA su Lavori, Forniture e OOS €	Spese Tecniche €	IVA su Spese Tecniche €	Totale Quadro Economico arrotondato €	Tempo di ritorno semplice anni	Tempo di ritorno semplice con CER anni
1	Palma Campania (NA)	Condominio 1.1 - Viale Giacomo D'Antonio 41	57,96	78.246 €	78.246 €	7.825 €	86.071 €	8.607 €	12.911 €	2.840 €	110.500 €	14	7
2	Palma Campania (NA)	Condominio 2.1 - Viale Alcide De Gasperi 28	70,84	95.634 €	95.634 €	9.563 €	105.197 €	10.520 €	15.780 €	3.472 €	135.000 €	14	7
3	Palma Campania (NA)	Condominio 3.1 - Viale Alcide De Gasperi 73	71,76	96.876 €	96.876 €	9.688 €	106.564 €	10.656 €	15.985 €	3.517 €	136.800 €	14	7
4	San Giuseppe Vesuviano (NA)	Condominio 1.2 - Via Padre Gino Ceschelli, 43	19,78	38.571 €	38.571 €	3.857 €	42.428 €	4.243 €	6.364 €	1.400 €	54.500 €	18	9
5	San Giuseppe Vesuviano (NA)	Condominio 2.2 - Traversa Milano, 2	19,78	38.571 €	38.571 €	3.857 €	42.428 €	4.243 €	6.364 €	1.400 €	54.500 €	20	10
6	San Giuseppe Vesuviano (NA)	Condominio 3.2 - Traversa Ceschelli, SNC	19,78	38.571 €	38.571 €	3.857 €	42.428 €	4.243 €	6.364 €	1.400 €	54.500 €	20	10
7	Comune di Palma Campania	Istituto Comprensivo Statale 2° "Vincenzo Russo"	58,88	79.488 €	79.488 €	7.949 €	87.437 €	8.744 €	13.116 €	2.885 €	112.200 €	11	7
8	Comune di Palma Campania	Scuola Secondaria di 1° Grado "Antonio de Curtis"	99,82	134.757 €	134.757 €	13.476 €	148.233 €	14.823 €	22.235 €	4.892 €	190.200 €	10	6
9	Comune di Palma Campania	Terreno A30 Caserta - Salerno	609,04	700.396 €	700.396 €	70.040 €	770.436 €	77.044 €	115.565 €	25.424 €	988.500 €	12	6
10	Palma Campania	Casa Comunale Via Municipio	25,00	€	€	€	€	€	1.000 €	220 €	1.300 €	1	1
11	Palma Campania	Centro Polifunzionale O' Giò Via Ugo Di Fazio	6,00	€	€	€	€	€	1.000 €	220 €	1.300 €	1	1
12	Comune San Giuseppe Vesuviano	Scuola Rosselli Via Ceci	15,00	€	€	€	€	€	1.000 €	220 €	1.300 €	1	1
13	Comune San Giuseppe Vesuviano	Scuola Arimondola Via Marciotti	10,00	€	€	€	€	€	1.000 €	220 €	1.300 €	1	1
14	Comune San Giuseppe Vesuviano	Scuola Ceschelli Via Ciferi	12,00	€	€	€	€	€	1.000 €	220 €	1.300 €	1	1
15	Comune San Giuseppe Vesuviano	Scuola Elementare Nappi Via Nappi	5,00	€	€	€	€	€	1.000 €	220 €	1.300 €	1	1
			1100,64	1.301.110,00 €	1.301.110,00 €	130.111,00 €	1.431.221,00 €	143.122,10 €	220.683,15 €	48.550,29 €	1.844.500,00 €	0	0

Two different models of an energy community are being tested in the UCSA area by the Project.

1. The first model tried through public meetings, to activate the participants of the selected buildings (or others that attend the series of meetings) to carry out the installation of generation systems directly on the building's rooftops.
2. In the second model, the initiative is based on public systems installed or to be installed on public buildings, that share the surplus of energy generated with members of the energy community in situations of energy poverty.



COMMUNICATION STRATEGY

Our communication approach has consistently combined both online and offline methods to reach a broad and diverse audience.

Offline, we created and distributed flyers across the municipalities, targeting potentially interested groups, and placed posters in highly frequented areas such as study rooms, libraries, and public buildings in Palma Campania and San Giuseppe.

Online, we published announcements in digital newspapers, sent personalized email and WhatsApp invitations, and promoted the events through the official municipal pages and social media channels.



MERCOLEDÌ 26 MAGGIO 2025
Comunità Energetiche Rinnovabili: la condivisione dell'energia come opportunità per i territori della Zona Vesuviana



Partners

The inclusion of partners RETE ASSIST and ADOC was particularly advantageous, as both have a strong presence in the Campania region and a deep understanding of local challenges.

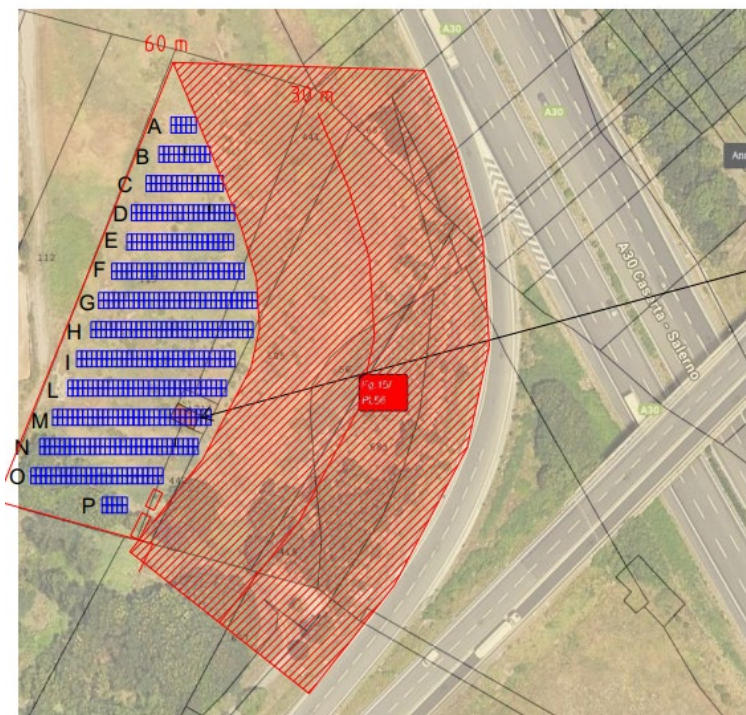
- **RETE ASSIST** trained social workers to help vulnerable households manage energy consumption, reduce bills, and access financial support.
- **ADOC** offered guidance on reducing energy costs, securing subsidies, and advocating for fairness in the energy market.

Their expertise in energy savings and consumer support shaped the workshops, providing participants with practical solutions and fostering a collaborative atmosphere.





FONDAZIONE DI PARTECIPAZIONE CER VESUVIO EST



Summary table - generators of the Plant

Num. Gen.	No. of modules	Module power	Peak power	Orient. compared to the South	Incline. with respect to the horizontal plane.
1	630	700 Wp	441 kWp	0°	30°

Summary table – emissions avoided as a result of the Plant

Annual producible energy	622.028 kWh
Amount of emissions avoided per year	156,7 tonn di CO ₂

A30 Caserta – Salerno (Coordinate 40.84849 - 14.542273)

Thank you for your attention!



www.socialenergyplayers.eu

